



# Student-Centered Experience



GOAL: Develop/sustain a culture of belonging, safety and positive student-staff relationships.

## King Elementary Students and Staff are GAME CHANGERS Promoting Kindness to End Hate and Racism

This fall our Equity and Restorative Justice Department launched Hate and Bias Protocol preventative lessons for students, K-12. Our team is actively working to empower students to interrupt hate and bias and build empathy, respect and understanding. Creating a culture of kindness in schools is essential to ensuring a safe and inclusive environment. By providing education on the impact of hurtful language and equipping students with strategies to interrupt hate and bias speech, we empower them to be active participants in promoting kindness and a more respectful inclusive community.



At King Elementary, students took a timeout to learn about hateful language, how to interrupt hate speech, and how to stand up for one another. As a result, they recognized that students who lead by example—by reaching out and supporting their peers—are Game Changers in this work. This video is their response, sharing their message for ending hate and promoting kindness, acceptance, and inclusivity.

Please watch and celebrate the incredible work of King Elementary—where Game Changers are leading the way! (A special acknowledgement should be given to VPS videographer Ian Southworth for the video clips!!!)



**Scan to Watch**  
get-vps.info/4hMcLtd



# Our Vision of a Graduate

Vancouver Public Schools Graduates have the core knowledge and life-ready skills to meet the real-world demands of their chosen next step.



- Academically prepared
- Culturally competent
- Critical thinkers
- Effective communicators
- Resilient
- Life-long learners
- Engaged community members



## Student-Centered Staff

**Goal 1:** Develop and participate in rich, relevant, and meaningful professional learning that supports each student.

**Goal 2:** Invest in systems and resources to increase, retain and promote a workforce that reflects our student population and whose practices align with our district's mission and goals.

**Goal 3:** Utilize the professional learning community model as a vehicle for focusing on learning as our fundamental purpose through a culture of collaboration that results in measurable increases in student learning.



## Student-Centered Experience

**Goal 1:** Develop/sustain a culture of belonging, safety, and positive student-staff relationships.

**Goal 2:** Prepare each student for the opportunities and demands of the next steps on their vision of a VPS graduate journey.



## Student-Centered Community

**Goal 1:** Increase family and community member connection with the school district and/or individual schools.

**Goal 2:** Collaborate with families to understand and support their students, with special attention for underserved and marginalized student groups.

**Goal 3:** Develop sustainable practices and leverage resources to address issues of inequity with the school system.

**Student Equity & Inclusionary Practices**  
A culture of belonging, high access, and benefit

**Professional Learning Communities**  
Intentionally designing the learning experience for the variability of our learners

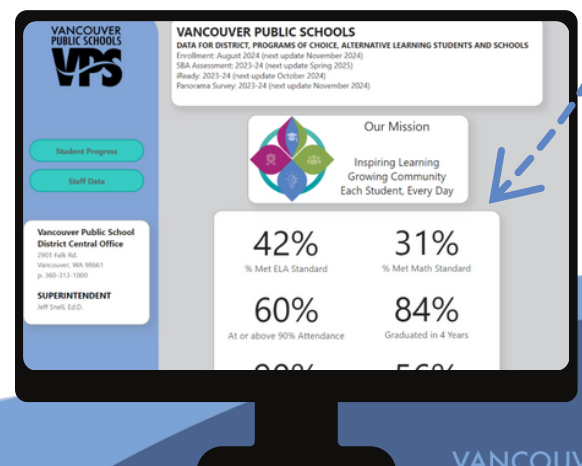
**Student Learning**  
Vision of a Graduate

If we use our strategic plan and equity policy to **focus**, and the professional learning community process to **do**, we will collectively **grow** in our practice and student learning and the student experience will be positively **impacted**.



## View Our Progress

[vansd.org/performance-data](https://vansd.org/performance-data)



## Explore Our Strategic Plan

[vansd.org/strategic-plan](https://vansd.org/strategic-plan)

