



# Student-Centered Experience



**GOAL:** Develop/sustain a culture of belonging, safety and positive student-staff relationships.

## Building Skills, Building Futures: CTE at VPS

### INVESTING IN THE TRADES:

### New Trades Buildings on Hudson's Bay and Fort Vancouver Campuses

Vancouver Public Schools' Career and Technical Education (CTE) is building pathways for students to thrive in vital industries like manufacturing, construction, and other skilled trades. New buildings are being added to several school campuses, significantly expanding our CTE program offerings. These developments are made possible by community donors, who partnered with the Foundation for VPS to **fully fund** these state-of-the-art facilities.

This expansion will help us realize our vision:  
*Develop programing, in partnership with local employers and associations, to train students for entry level jobs upon graduation and completion of our CTE programs.*

### Mentoring the Next Generation

VPS trades students brought their tools and expertise to elementary schools to build toolboxes side-by-side with younger students. This year alone, over 600 4/5th grade students have each built their own toolbox.



**Lynch Advanced Manufacturing Building**  
(Fort Vancouver) - under construction  
**Endeavour Technical Trades Building**  
(Hudson's Bay)

### CTE PROGRAM EXPANSION:

**2017**  
30 students

**2025-26**

450 students enrolled  
in 5 buildings

### Career Ready

Trades students joined peers from across the region at CTE's "Grade 13" event, connecting with local employers to learn about immediate job opportunities and high-demand skilled trades careers.

### BY THE NUMBERS:

**400+ interviews**  
AND  
**~200 follow-ups**

This year, **over 20 students** placed in a paid work experience with a local employer



# Our Vision of a Graduate

Vancouver Public Schools Graduates have the core knowledge and life-ready skills to meet the real-world demands of their chosen next step.



- Academically prepared
- Culturally competent
- Critical thinkers
- Effective communicators
- Resilient
- Life-long learners
- Engaged community members



## Student-Centered Staff

**Goal 1:** Develop and participate in rich, relevant, and meaningful professional learning that supports each student.

**Goal 2:** Invest in systems and resources to increase, retain and promote a workforce that reflects our student population and whose practices align with our district's mission and goals.

**Goal 3:** Utilize the professional learning community model as a vehicle for focusing on learning as our fundamental purpose through a culture of collaboration that results in measurable increases in student learning.



## Student-Centered Experience

**Goal 1:** Develop/sustain a culture of belonging, safety, and positive student-staff relationships.

**Goal 2:** Prepare each student for the opportunities and demands of the next steps on their vision of a VPS graduate journey.



## Student-Centered Community

**Goal 1:** Increase family and community member connection with the school district and/or individual schools.

**Goal 2:** Collaborate with families to understand and support their students, with special attention for underserved and marginalized student groups.

**Goal 3:** Develop sustainable practices and leverage resources to address issues of inequity with the school system.

**Student Equity & Inclusionary Practices**  
A culture of belonging, high access, and benefit

**Professional Learning Communities**  
Intentionally designing the learning experience for the variability of our learners

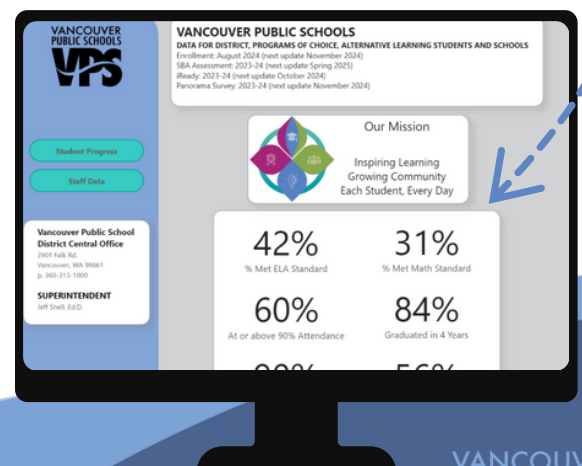
**Student Learning**  
Vision of a Graduate

If we use our strategic plan and equity policy to **focus**, and the professional learning community process to **do**, we will collectively **grow** in our practice and student learning and the student experience will be positively **impacted**.



## View Our Progress

[vansd.org/performance-data](https://vansd.org/performance-data)



## Explore Our Strategic Plan

[vansd.org/strategic-plan](https://vansd.org/strategic-plan)