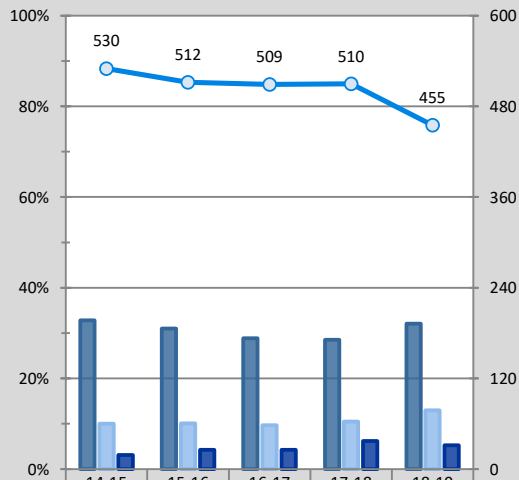
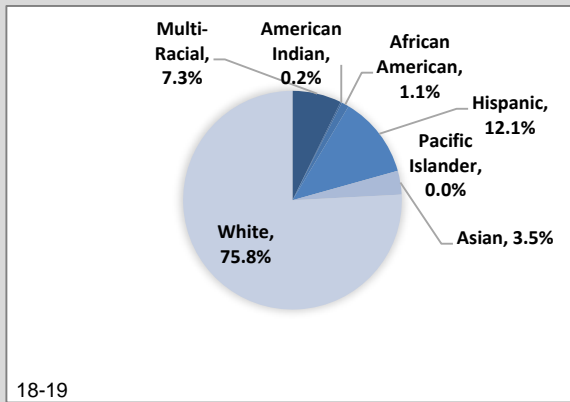




2018-2019 Salmon Creek Elementary School 2020 School Performance Scorecard

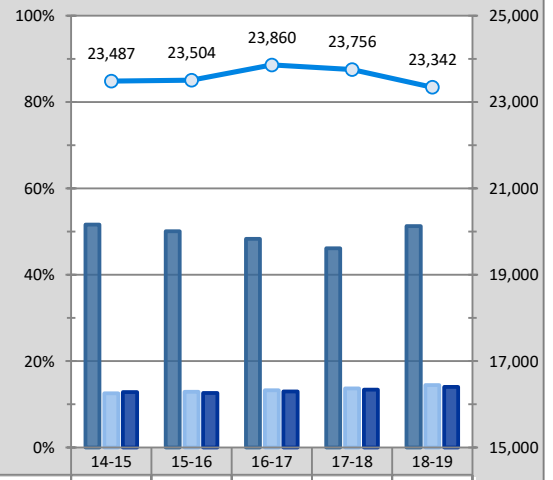
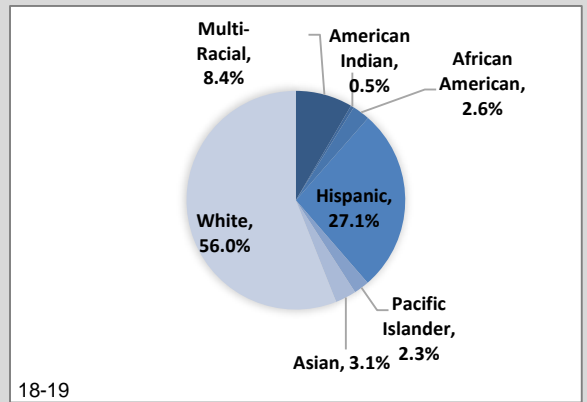
Learning Milestones	Indicators	School			District		
		16-17	17-18	18-19	16-17	17-18	18-19
Elementary Milestones	Students demonstrating expected skills of entering kindergartners on WaKIDS	66%	93%	86%	32%	61%	56%
	1st Grade Students on or above grade level on the iReady Spring Reading	68%	77%	74%	48%	46%	45%
	3rd Grade Students on or above grade level on the iReady Spring Reading	62%	67%	66%	43%	44%	42%
	5th Grade Students on or above grade level on the iReady Spring Math	57%	61%	51%	39%	41%	37%
Climate and Culture	Kindergartners at or above 90% attendance	92%	91%	92%	75%	79%	74%
	Elementary students at or above 90% attendance	94%	92%	90%	82%	84%	79%
State Assessment Performance							
Elementary School Assessment Data	3rd graders meeting or exceeding standard on SBA ELA	66%	71%	73%	45%	51%	50%
	3rd graders meeting or exceeding standard on SBA Math	69%	66%	74%	50%	48%	51%
	4th graders meeting or exceeding standard on SBA ELA	60%	56%	64%	48%	50%	50%
	4th graders meeting or exceeding standard on SBA Math	71%	58%	69%	47%	45%	46%
	5th graders meeting or exceeding standard on SBA ELA	64%	64%	58%	53%	56%	55%
	5th graders meeting or exceeding standard on SBA Math	56%	59%	55%	39%	42%	42%
	5th graders meeting or exceeding standard on the state science test	67%	63%	57%	58%	50%	46%

School Demographics



	14-15	15-16	16-17	17-18	18-19
Free or Reduced-Price Meals	33%	31%	29%	29%	32%
Special Education	10%	10%	10%	10%	13%
English Language Learners	3%	4%	4%	6%	5%
Total Enrollment	530	512	509	510	455

District Demographics



	14-15	15-16	16-17	17-18	18-19
Free or Reduced-Price Meals	52%	50%	48%	46%	51%
Special Education	13%	13%	13%	14%	14%
English Language Learners	13%	13%	13%	13%	14%
Total Enrollment	23,487	23,504	23,860	23,756	23,342