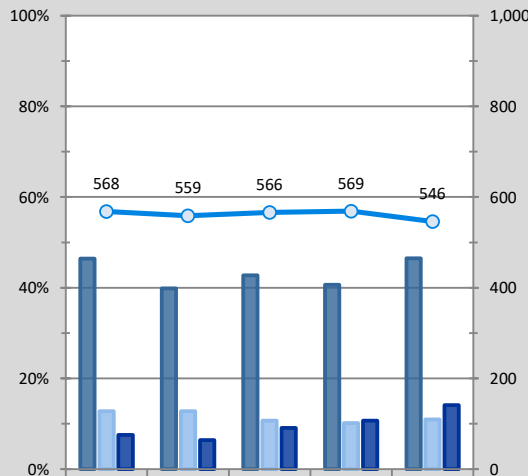
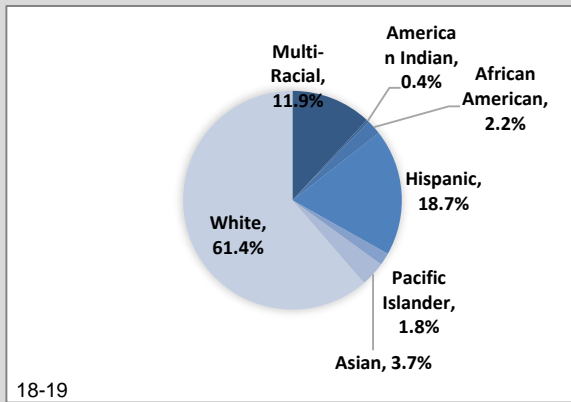




2018-2019 Eisenhower Elementary School 2020 School Performance Scorecard

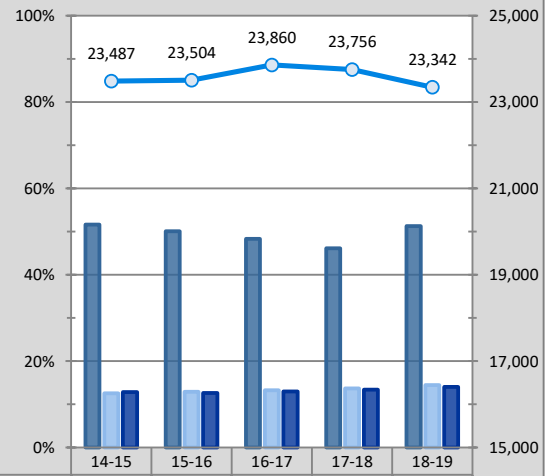
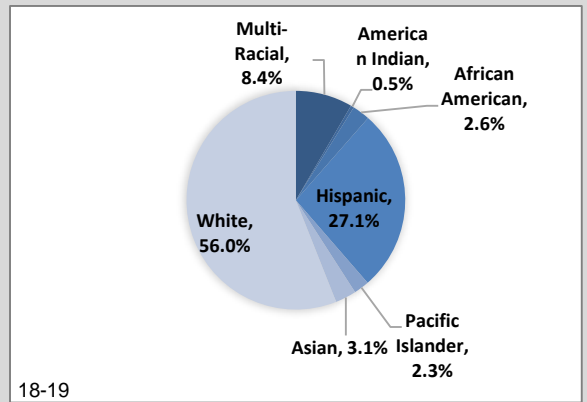
Learning Milestones	Indicators	School			District		
		16-17	17-18	18-19	16-17	17-18	18-19
Elementary Milestones	Students demonstrating expected skills of entering kindergartners on WaKIDS	21%	36%	51%	32%	61%	56%
	1st Grade Students on or above grade level on the iReady Spring Reading	49%	59%	51%	48%	46%	45%
	3rd Grade Students on or above grade level on the iReady Spring Reading	51%	62%	51%	43%	44%	42%
	5th Grade Students on or above grade level on the iReady Spring Math	51%	49%	50%	39%	41%	37%
Climate and Culture	Kindergartners at or above 90% attendance	73%	80%	70%	75%	79%	74%
	Elementary students at or above 90% attendance	84%	85%	80%	82%	84%	79%
State Assessment Performance							
Elementary School Assessment Data	3rd graders meeting or exceeding standard on SBA ELA	56%	68%	63%	45%	51%	50%
	3rd graders meeting or exceeding standard on SBA Math	65%	63%	59%	50%	48%	51%
	4th graders meeting or exceeding standard on SBA ELA	74%	73%	73%	48%	50%	50%
	4th graders meeting or exceeding standard on SBA Math	67%	65%	68%	47%	45%	46%
	5th graders meeting or exceeding standard on SBA ELA	66%	73%	70%	53%	56%	55%
	5th graders meeting or exceeding standard on SBA Math	50%	54%	61%	39%	42%	42%
	5th graders meeting or exceeding standard on the state science test	73%	63%	63%	58%	50%	46%

School Demographics



Category	14-15	15-16	16-17	17-18	18-19
Free or Reduced-Price Meals	46%	40%	43%	41%	47%
Special Education	13%	13%	11%	10%	11%
English Language Learners	8%	6%	9%	11%	14%
Total Enrollment	568	559	566	569	546

District Demographics



Category	14-15	15-16	16-17	17-18	18-19
Free or Reduced-Price Meals	52%	50%	48%	46%	51%
Special Education	13%	13%	13%	14%	14%
English Language Learners	13%	13%	13%	13%	14%
Total Enrollment	23,487	23,504	23,860	23,756	23,342