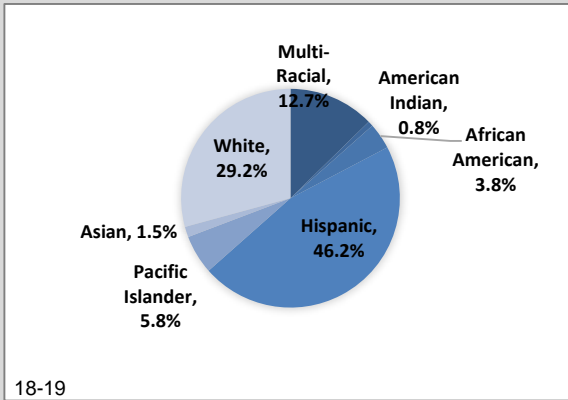




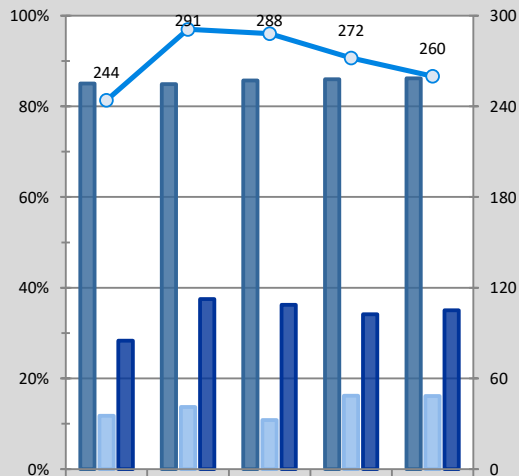
# 2018-2019 Fruit Valley Elementary School 2020 School Performance Scorecard

Learning Milestones	Indicators	School			District		
		16-17	17-18	18-19	16-17	17-18	18-19
Elementary Milestones	Students demonstrating expected skills of entering kindergartners on WaKIDS	7%	51%	47%	32%	61%	56%
	1st Grade Students on or above grade level on the iReady Spring Reading	23%	30%	14%	48%	46%	45%
	3rd Grade Students on or above grade level on the iReady Spring Reading	22%	19%	25%	43%	44%	42%
	5th Grade Students on or above grade level on the iReady Spring Math	17%	6%	21%	39%	41%	37%
Climate and Culture	Kindergartners at or above 90% attendance	70%	79%	63%	75%	79%	74%
	Elementary students at or above 90% attendance	75%	77%	68%	82%	84%	79%
State Assessment Performance							
Elementary School Assessment Data	3rd graders meeting or exceeding standard on SBA ELA	27%	30%	30%	45%	51%	50%
	3rd graders meeting or exceeding standard on SBA Math	29%	20%	26%	50%	48%	51%
	4th graders meeting or exceeding standard on SBA ELA	8%	31%	23%	48%	50%	50%
	4th graders meeting or exceeding standard on SBA Math	n/a	24%	23%	47%	45%	46%
	5th graders meeting or exceeding standard on SBA ELA	26%	19%	33%	53%	56%	55%
	5th graders meeting or exceeding standard on SBA Math	12%	6%	22%	39%	42%	42%
	5th graders meeting or exceeding standard on the state science test	38%	23%	27%	58%	50%	46%

## School Demographics

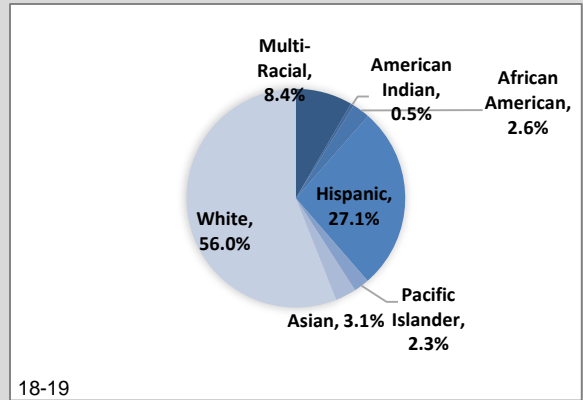


18-19

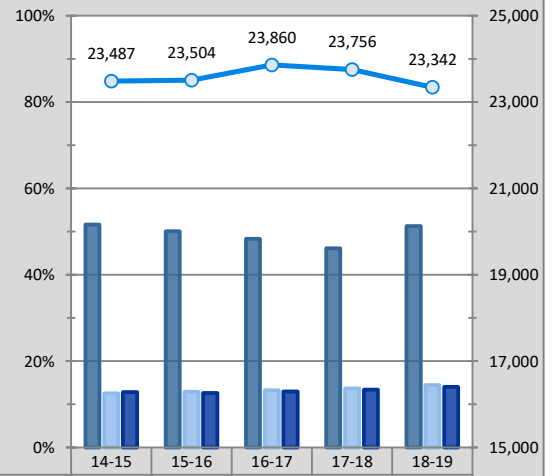


	14-15	15-16	16-17	17-18	18-19
Free or Reduced-Price Meals	85%	85%	86%	86%	86%
Special Education	12%	14%	11%	16%	16%
English Language Learners	28%	38%	36%	34%	35%
Total Enrollment	244	291	288	272	260

## District Demographics



18-19



	14-15	15-16	16-17	17-18	18-19
Free or Reduced-Price Meals	52%	50%	48%	46%	51%
Special Education	13%	13%	13%	14%	14%
English Language Learners	13%	13%	13%	13%	14%
Total Enrollment	23,487	23,504	23,860	23,756	23,342